

Room Scheduling

Find and Book a Room the Easy Way



Extron

Thursday, January 16
9:58 AM

Find a Meeting Space

ROOM	NOW	NEXT
BOARDROOM 1st Floor	Adhoc 9:30 AM - 11:00 AM	Quarterly Planning Meeting 11:00 AM - 4:00 PM Candace Yundt
DEVELOPER CONFERENCE 2.1 1st Floor	Product Alignment and Handoff 9:00 AM - 10:00 AM Meibang Lentz	Computer Software Programming and Data Population Responsibilities 10:00 AM - 11:45 AM Arish Patel
EAST CONF RM 4.1 1st Floor	Software Project Review 9:45 AM - 11:00 AM Resra Paabai	Designing for AV Systems 11:00 PM - 2:15 PM
ENGINEERING WAR ROOM 1st Floor	Compliance Best Practices 9:45 AM - 10:15 AM Wabur Ellis	Available 10:15 AM - 11:00 AM
HR CONF RM 1.1 1st Floor	Available Available until 11:00 AM	Interview Marketing Candidate 11:00 AM - 12:00 PM
IT WAR ROOM 1st Floor	Wireless Infrastructure 9:45 AM - 10:30 AM	Cloud Migration 10:30 AM - 2:00 PM
MARKETING CONF RM 4.2 1st Floor	Adhoc 9:45 AM - 10:15 AM	CMS Discussion 10:15 AM - 12:00 PM
PD CONF RM 3.2 1st Floor	Product Roadmap Updates 9:00 AM - 6:00 PM Kagle Rutherford	Available 4:00 PM - 9:00 AM Jan 17
UX CONF RM 2.1 1st Floor	User Research Findings 9:30 AM - 2:00 PM	User Persona Discussion 2:00 PM - 4:30 PM Ben Martinez
VIDEO CONF ROOM 1st Floor	Customer Video Call 9:00 AM - 3:00 PM	UCaaS Service Benchmark Performance 3:00 PM - 4:00 PM



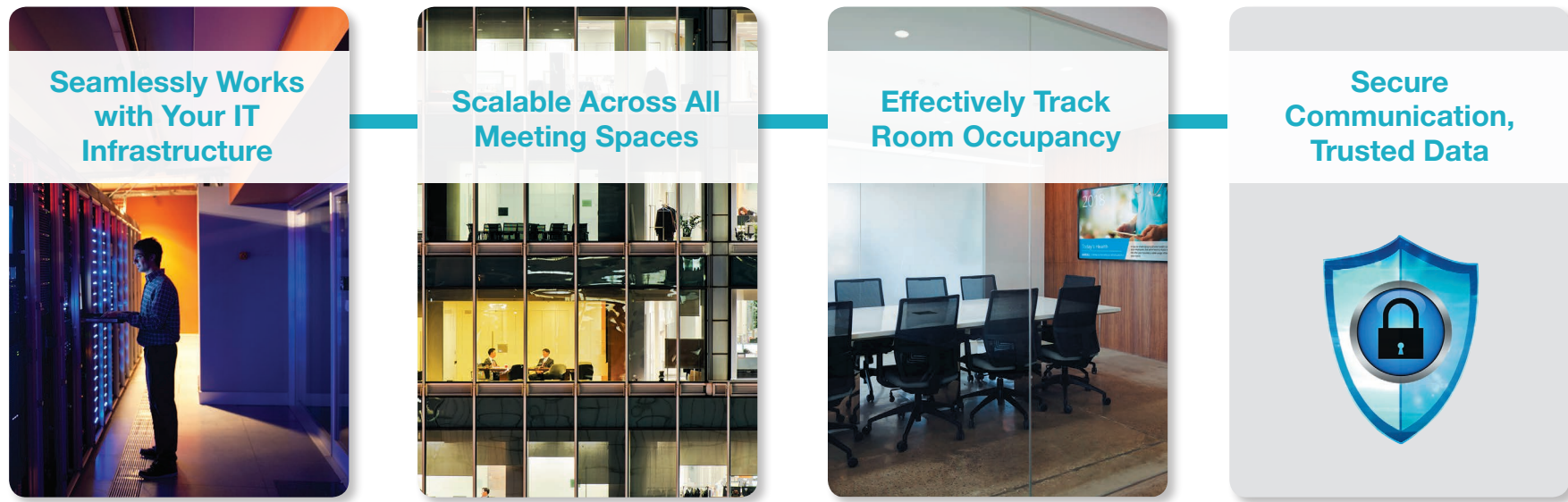
In today's business environment, meeting rooms are in high demand. Finding and booking an available space can be time-consuming. We have simplified this experience with a suite of Room Scheduling products which include TouchLink panels, Room Agent software, and the TouchLink Wayfinding Interface.

Users can make reservations from individual room scheduling panels, a computer, or mobile device that directly connects to popular calendaring services. With a TouchLink Wayfinding Interface, users can view room availability, make a reservation, and find a room from a centralized location.



Facility Management Using a Tailored Solution

Tailor the Room Scheduling system for your organization and across any of your offices worldwide. There is no need to add new calendar types within your organization's IT infrastructure; Extron Room Scheduling fits easily into your existing tools. Whether your organization has 10 conference rooms or 1000, this secure, scalable solution is the ideal choice.

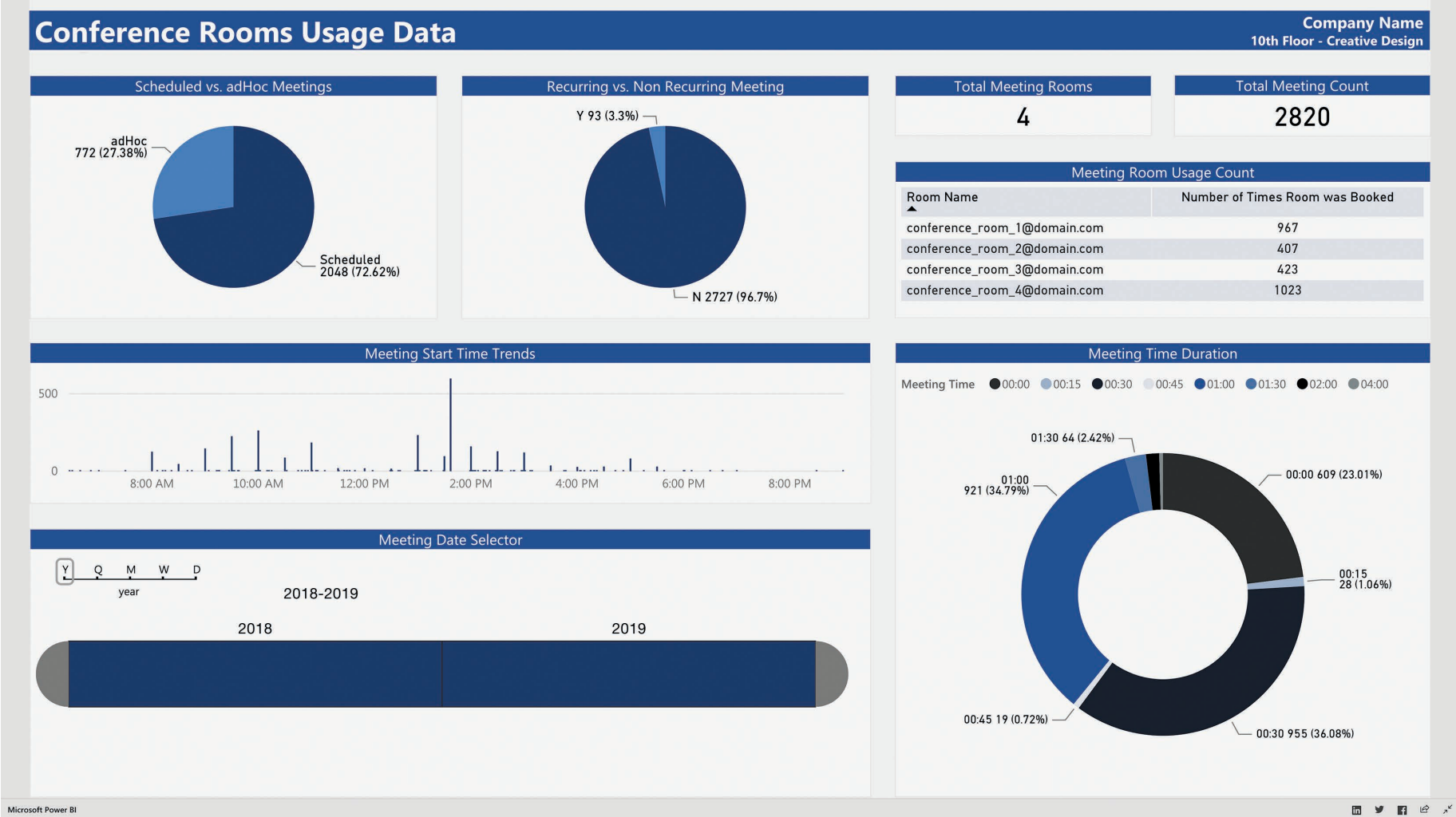


Manage Room Availability with Occupancy Sensors

Combining TouchLink Scheduling panels with occupancy sensors adds an extra layer of efficiency to your meeting spaces by reducing the risk of “ghost” and “zombie” meetings, where booked rooms go unused, resources are wasted, and team productivity is negatively impacted. Whether rooms are reserved ad-hoc or scheduled, occupancy sensors ensure that the room is available for others when needed.

Room Scheduling Analytics

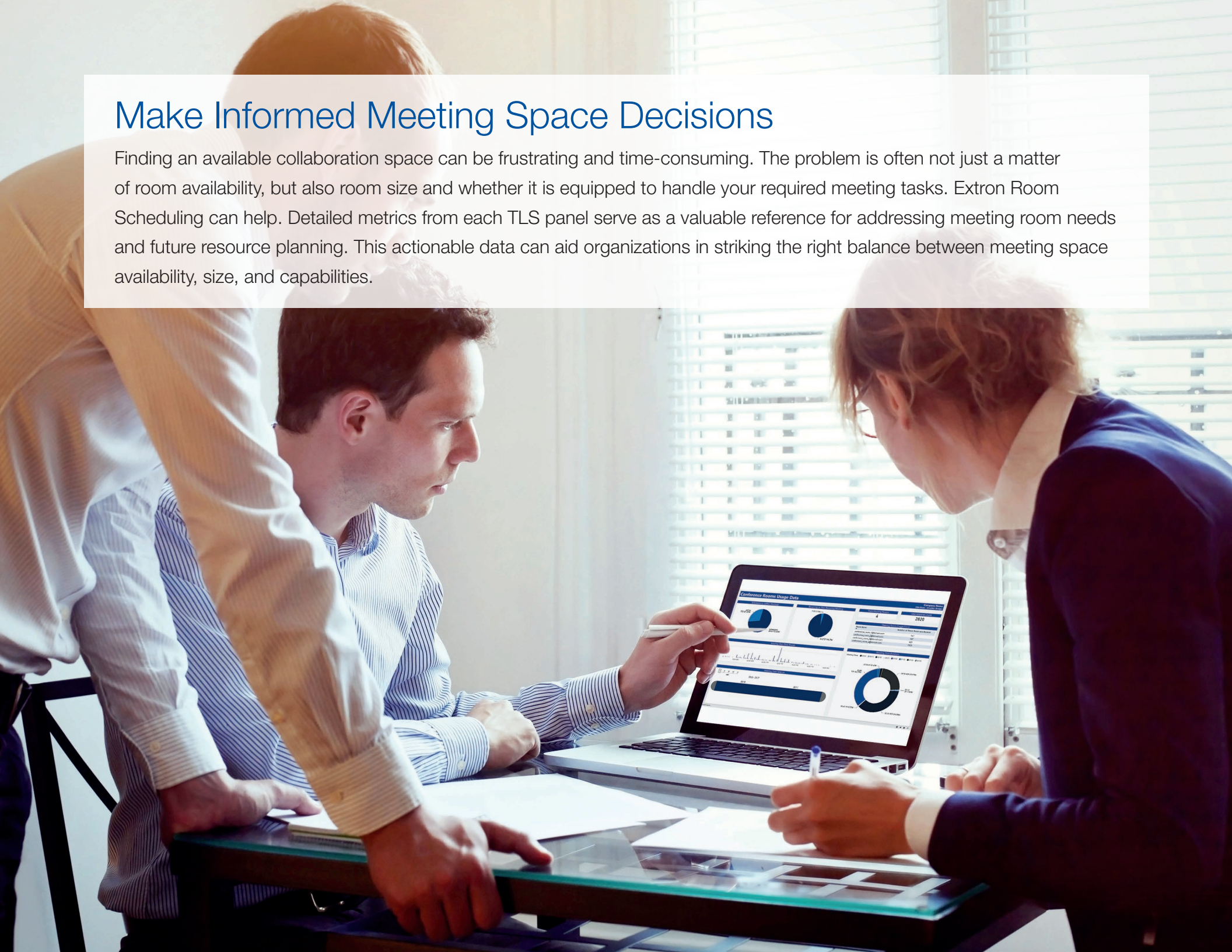
TouchLink Scheduling panels provide the information you need to closely analyze room usage, activity patterns, and occupancy trends across the organization. The Scheduling Activity file provides at-a-glance room usage and meeting data for each touchpanel. Simply download this file and you will have all the information you need to generate powerful reports.



Scheduling Activity file imported into Microsoft Power BI.

Make Informed Meeting Space Decisions

Finding an available collaboration space can be frustrating and time-consuming. The problem is often not just a matter of room availability, but also room size and whether it is equipped to handle your required meeting tasks. Extron Room Scheduling can help. Detailed metrics from each TLS panel serve as a valuable reference for addressing meeting room needs and future resource planning. This actionable data can aid organizations in striking the right balance between meeting space availability, size, and capabilities.





Conference Room 401

Available

February 5 - 9:24am

9:30	10am	10:30	11pm	11:30	12pm	12:30	...
------	------	-------	------	-------	------	-------	-----

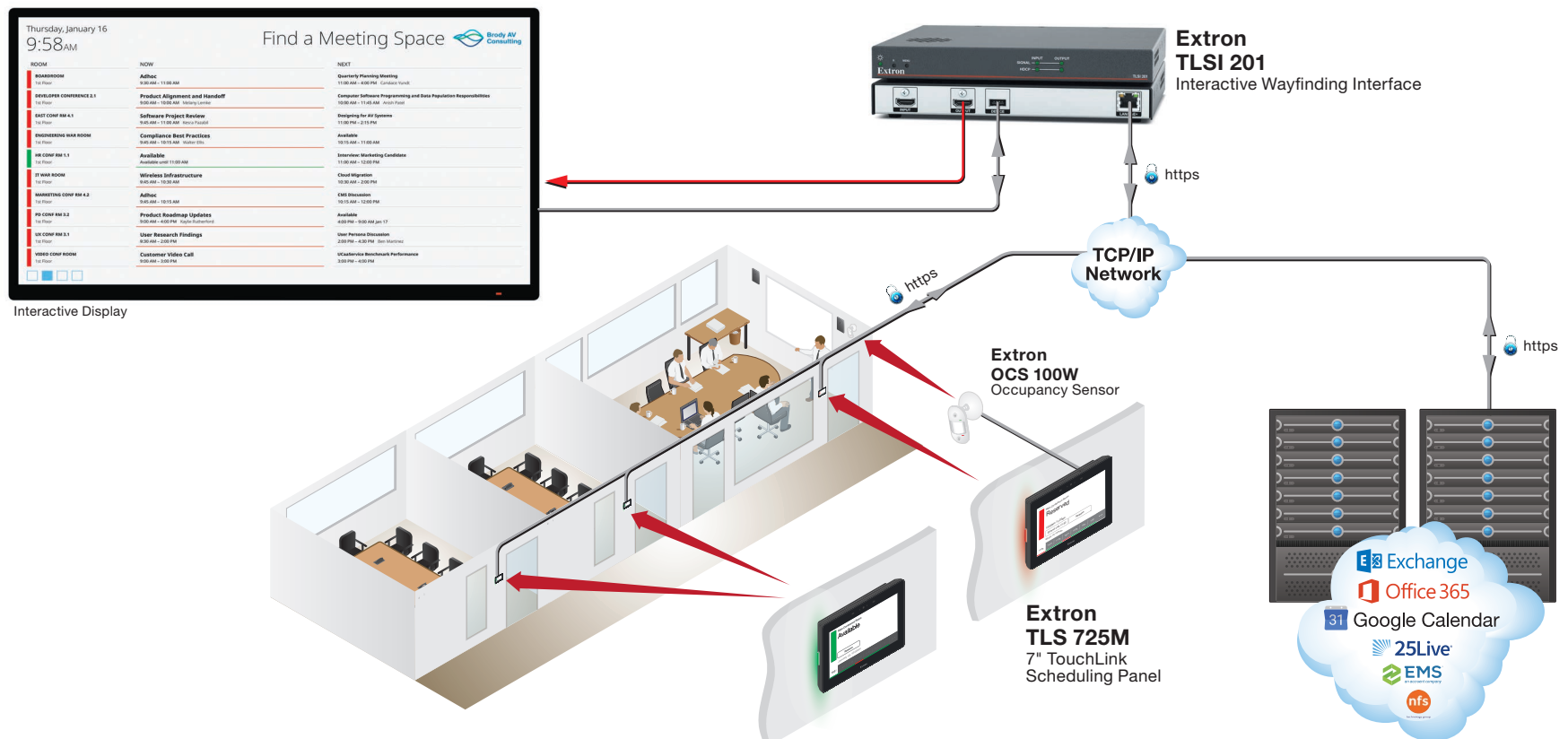
Extron



Security and Trusted Data with the Enterprise in Mind

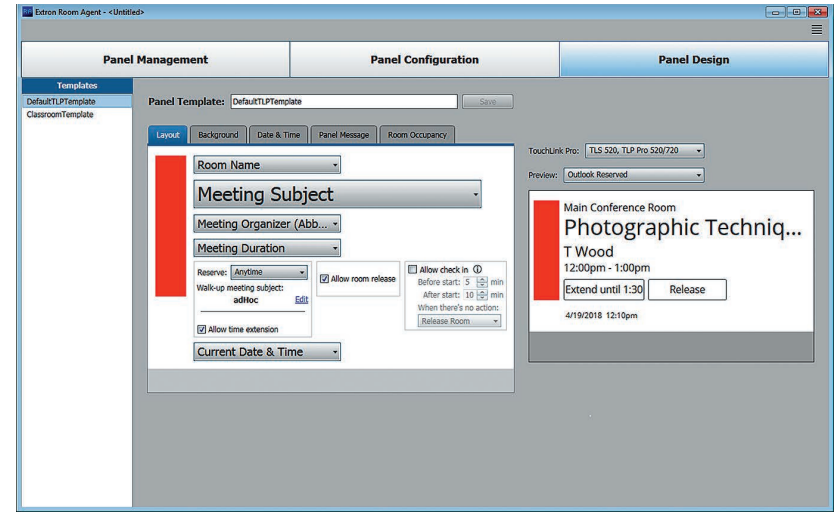
With Extron Room Scheduling systems, all activity and usage data is gathered from trusted, reliable sources. In addition, the hardware, application, and network are all protected so you can be confident in the integrity of your system and your data.

- Encrypted communications across the ecosystem
- Secured panel configurations and access to resource calendars using organization-defined credentials
- Each panel maintains a separate connection with the resource calendar assigned to each room through the calendar server
- Manage resource calendars according to your organization's administration policy and standards

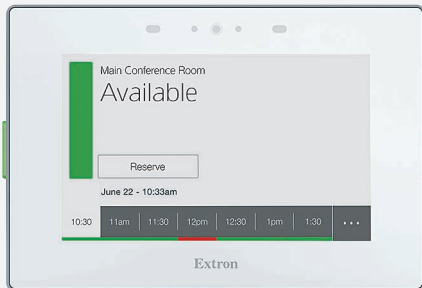


Simple Setup - No Programming

All Extron Room Scheduling products are configured with Extron Room Agent™ software. Simply connect them to your computer, open the free Room Agent software, fill in the required fields to compose the user interface, and you're done. Customization options include custom colors, background themes, logo, and the ability to turn on or off specific text fields. Room Scheduling information can also be displayed centrally on an interactive grid or map using the Extron Wayfinding Interface.



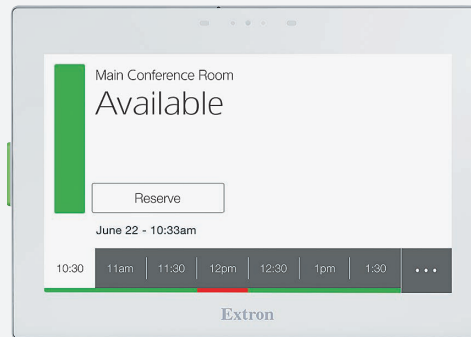
TouchLink Room Scheduling Panels



5" TouchLink Scheduling Panel

Wall Mount:

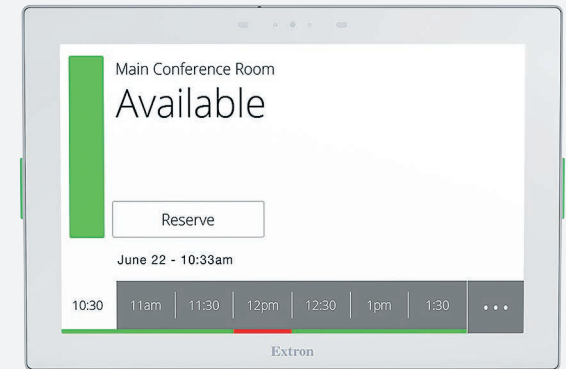
TLS 525M 5" Touchscreen, 800x480 resolution
Equipped with a digital input and supports PoE
Available in Black or White



7" TouchLink Scheduling Panel

Wall Mount:

TLS 725M 7" Touchscreen, 1024x600 resolution
Equipped with a digital input and supports PoE
Available in Black or White



10" TouchLink Scheduling Panel

Wall Mount:

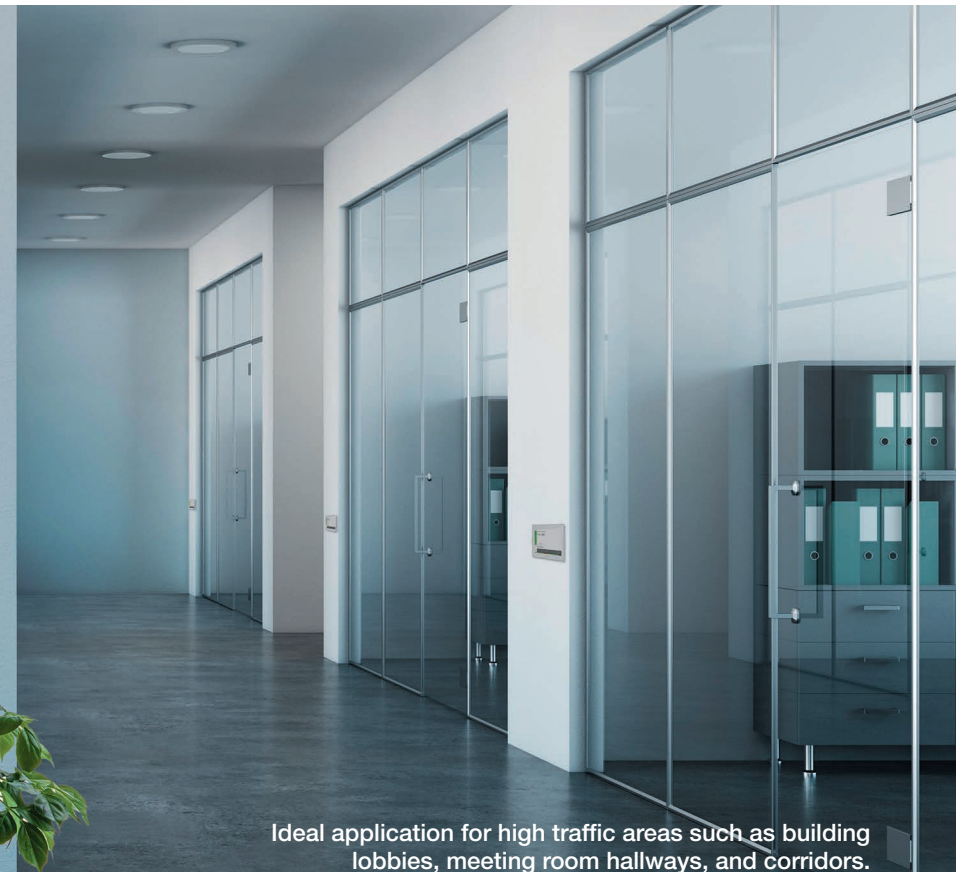
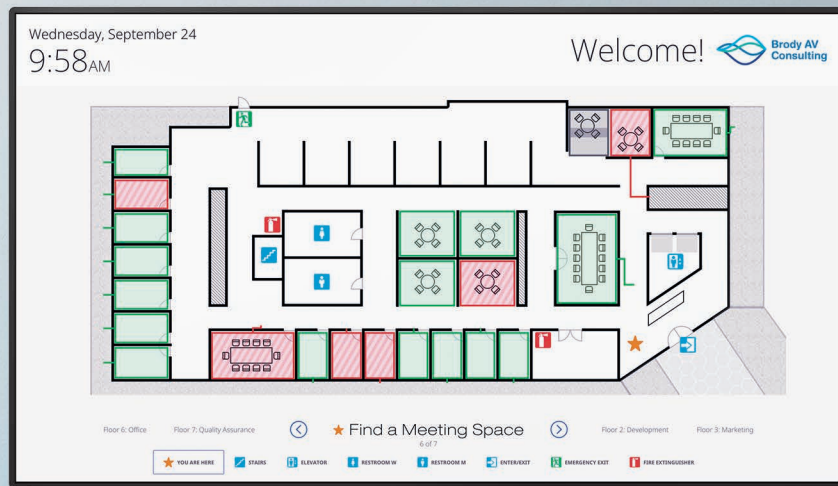
TLS 1025M 10" Touchscreen, 1280x800 resolution
Equipped with a digital input and supports PoE
Available in Black or White

Wayfinding Interface

Designed to connect directly with Extron Room Scheduling panels, the TLSI 201 Interactive Wayfinding Interface provides real-time meeting space availability, status, and location information using a centralized display. Now users can easily locate and book meeting spaces for the day or week on an interactive grid or map with ease. No additional programming, external processor, or software license is required.



TLSI 201 Supports 40" or larger 1080p interactive displays. Equipped with PoE+ and USB 2.0.



Ideal application for high traffic areas such as building lobbies, meeting room hallways, and corridors.

Occupancy Sensors

Any TLS panel equipped with a digital input will work with Extron OCS 100 series occupancy sensors, which monitor room occupancy and, after a user-defined time, release the room back to available status.



OCS 100W Wall Mount



OCS 100C Ceiling Mount

Mounting Accessories

Multiple mounting choices are available for the touchpanels, including on-wall, in-wall, as well as secure mounting to almost any flat surface, including glass, granite or mullion.



Angle Mounts

- AMK 1 Angle Mount Kit for TLS 525M
- AMK 2 Angle Mount Kit for TLS 725M
- AMK 3 Angle Mount Kit for TLS 1025M



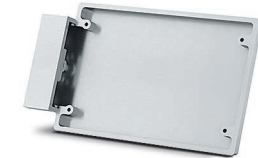
In-Wall Mounts

- RWM 1 Recessed Wall Mount Kit for TLS 525M
- RWM 2 Recessed Wall Mount Kit for TLS 725M and TLS 1025M



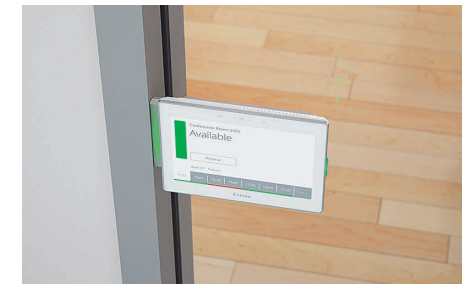
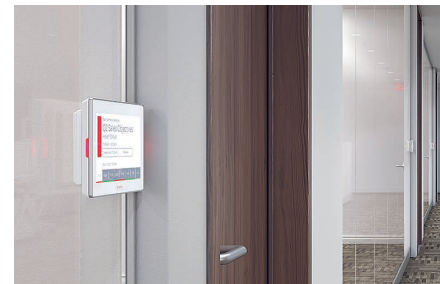
On-Wall, Glass, or Granite Mounts

- SMK 1 Surface Mount Kit for TLS 525M
- SMK 2 Surface Mount Kit for TLS 725M
- SMK 3 Surface Mount Kit for TLS 1025M



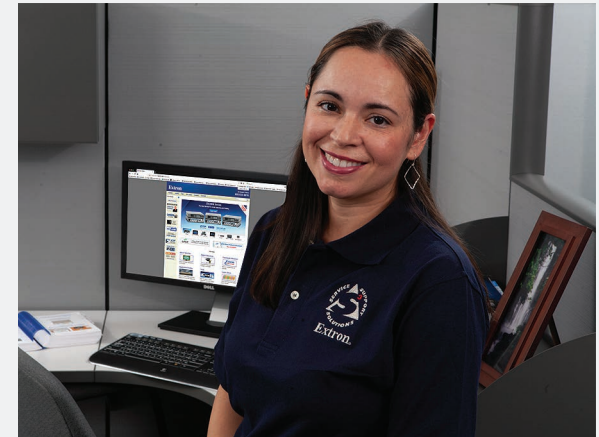
Mullion Mounts

- MMK 1 Mullion Mounts Kit for TLS 525M
- MMK 2 Mullion Mounts Kit for TLS 725M
- MMK 3 Mullion Mounts Kit for TLS 1025M



Low Cost of Ownership

Experience the benefits of low cost of ownership combined with significant returns on your investment year over year. Extron provides a turnkey solution that your organization's support team can easily provision and manage. The rigorous development and testing we implement for our solution ensures an easy deployment for you and reliable performance. Extron Room Scheduling also provides simplified user access management for administrators. The typical costs of system maintenance are drastically reduced, as this solution eliminates the need for any recurring maintenance fees, licensing fees, programming, or additional equipment to be placed on the network.



Extron Support

Should the need ever arise for additional support, Extron provides dedicated, full-service support around the globe. You can be confident that our knowledgeable team will provide you with any resources needed to support you and help simplify the task of system integration.

Advantages



- ✓ No license purchases
- ✓ Variety of panel sizes to suit your application
- ✓ No recurring subscription or maintenance fees
- ✓ Several customization options within free software
- ✓ Direct connection to calendar server
- ✓ Flexible mounting options



WORLDWIDE SALES OFFICES

Anaheim • Raleigh • Silicon Valley • Las Vegas • Dallas • New York • Washington, DC • Toronto • Mexico City
Paris • London • Frankfurt • Madrid • Stockholm • Amersfoort • Moscow • Dubai • Johannesburg • Tel Aviv • Sydney
Melbourne • Bangalore • Mumbai • New Delhi • Singapore • Seoul • Shanghai • Beijing • Hong Kong • Tokyo

www.extron.com